



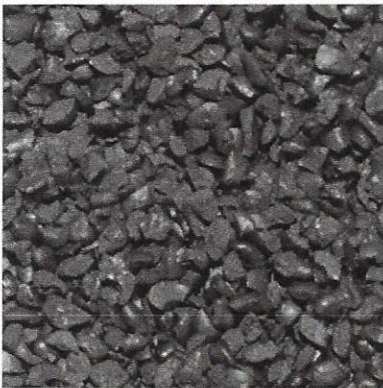
**CAST STEEL SHOT AND GRIT MADE IN THE USA.  
STATE OF THE ART MANUFACTURING PLANT IN MELVINDALE, MI.**

**Low Carbon Cast Steel Shot**



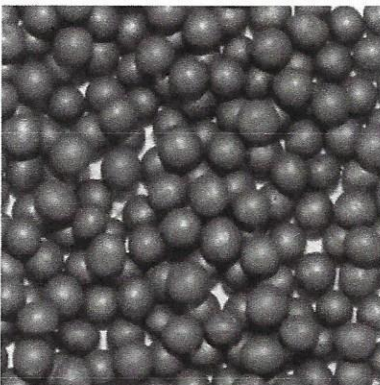
**Manufactured to SAE J2175-Specifications**  
**Bainite Microstructure -Superior Life, Brighter Finish**  
**All SAE Sizes Available:** S-780, S-660, S-550, S-460, S-390, S-330, S-280, S-230, S-170, S-110, S-70  
**Standard Hardness Range:** 40-50 RC, Average 45 RC  
**Blasting Applications:** Cleaning, Etching, Deburring and Descaling  
**Typical Customer Applications:** Automotive, Foundries, Forging Industry, Die Casting, Heat Treating, Bar Drawers, Farm Equipment, Pipe Coaters, Aluminum Processing, Ship Manufacturing, Aerospace Manufacturing, and Engine and Turbine Manufacturing.

**High Carbon Cast Steel Grit**



**Manufactured to SAE J444 & J1993 Specifications**  
**High Carbon Shot crushed to high angular particles for aggressive cleaning, etching applications**  
**Sizes Available:** G-14, G-16, G-18, G-25, G-40, G-50 & G-80  
**Hardness Available:** SG (40-50 RC) MG (50-55 RC) LG (56-60 RC) HG (60+)  
**Typical Applications:** Ship Building, Bridge Blasting, Rail and Transit Car, Epoxy Coating, Structural Steel, Pipe Coating, Water Tower Tank Reconditioning, Forging Plants, Foundries.

**High Carbon Cast Steel Shot**



**Manufactured to SAE J444-Specifications**  
**Tempered Martensite Microstructure**  
**Sizes Available:** S-330, S-280, S-230, S-170, S-110, S-70  
**Standard Hardness Range:** 40-50 RC, Average 45 RC  
Special Hardness available upon request.  
**Blasting Applications:** Cleaning, Etching, Deburring and Peening.  
**Typical Customer Applications:** Automotive, Foundries, Forging Industry, Die Casting, Heat Treating, Bar Drawers, Farm Equipment, Earth moving, Mining, Agricultural and Construction Equipment Manufacturing.

For further information regarding our Cast Steel product visit our website: [www.peerlesssteelabrasives.com](http://www.peerlesssteelabrasives.com)

Peerless also manufactures Cold Forge Steel Shot, GN-Grit, Aggregate, Ultra Soft Steel Shot, and Iron Aggregate.  
Please visit our web site at [www.peerlessmetal.com](http://www.peerlessmetal.com) for further information.

**18900 Rialto Street · Melvindale, MI 48122 (313) 841-5400**

**[www.peerlesssteelabrasives.com](http://www.peerlesssteelabrasives.com)**





## SAE SPECIFICATIONS FOR SHOT AND GRIT SCREENINGS

SAE SIZE NO.	SAE J444a SHOT Tolerances	Screen Openings		SAE SIZE NO	SAE J444a GRIT Tolerances	Screen Openings	
<b>S780</b>	All Pass No. 7 Screen .....	.1110 - 2.800		<b>G14</b>	All Pass No. 10 Screen .....	.0787 - 2.000	
	85% Min on No. 10 Screen .....	.0787 - 2.000			80% Min on No. 14 Screen .....	.0555 - 1.400	
	97% Min on No. 12 Screen .....	.0661 - 1.700			90% Min on No. 16 Screen .....	.0469 - 1.180	
<b>S660</b>	All Pass No. 8 Screen .....	.0937 - 2.360		<b>G16</b>	All Pass No. 12 Screen .....	.0661 - 1.700	
	85% Min on No. 12 Screen .....	.0661 - 1.700			75% Min on No. 16 Screen .....	.0469 - 1.180	
	97% Min on No. 14 Screen .....	.0555 - 1.400			85% Min on No. 18 Screen .....	.0394 - 1.000	
<b>S550</b>	All Pass No. 10 Screen .....	.0787 - 2.000		<b>G18</b>	All Pass No. 14 Screen .....	.0555 - 1.400	
	85% Min on No. 14 Screen .....	.0555 - 1.400			75% Min on No. 18 Screen .....	.0394 - 1.000	
	97% Min on No. 16 Screen .....	.0469 - 1.180			85% Min on No. 25 Screen .....	.0278 - 0.710	
<b>S460</b>	All Pass No. 10 Screen .....	.0787 - 2.000		<b>G25</b>	All Pass No. 16 Screen .....	.0469 - 1.180	
	5% Max on No. 12 Screen .....	.0661 - 1.700			70% Min on No. 25 Screen .....	.0278 - 0.710	
	85% Min on No. 16 Screen .....	.0469 - 1.180			80% Min on No. 40 Screen .....	.0165 - 0.425	
<b>S390</b>	All Pass No. 12 Screen .....	.0661 - 1.700		<b>G40</b>	All Pass No. 18 Screen .....	.0394 - 1.000	
	5% Max on No. 14 Screen .....	.0555 - 1.400			70% Min on No. 40 Screen .....	.0165 - 0.425	
	85% Min on No. 18 Screen .....	.0394 - 1.000			80% Min on No. 50 Screen .....	.0117 - 0.300	
<b>S330</b>	All Pass No. 14 Screen .....	.0555 - 1.400		<b>G50</b>	All Pass No. 25 Screen .....	.0278 - 0.710	
	5% Max on No. 16 Screen .....	.0469 - 1.180			65% Min on No. 50 Screen .....	.0117 - 0.300	
	85% Min on No. 20 Screen .....	.0331 - 0.850			75% Min on No. 80 Screen .....	.0070 - 0.180	
<b>S280</b>	All Pass No. 16 Screen .....	.0469 - 1.180		<b>G80</b>	All Pass No. 40 Screen .....	.0165 - 0.425	
	5% Max on No. 18 Screen .....	.0394 - 1.000			65% Min on No. 80 Screen .....	.0070 - 0.180	
	85% Min on No. 25 Screen .....	.0278 - 0.710			75% Min on No. 120 Screen .....	.0049 - 0.125	
<b>S230</b>	All Pass No. 18 Screen .....	.0394 - 1.000		<b>G120</b>	All Pass No. 50 Screen .....	.0117 - 0.300	
	10% Max on No. 20 Screen .....	.0331 - 0.850			60% Min on No. 120 Screen .....	.0049 - 0.125	
	85% Min on No. 30 Screen .....	.0234 - 0.600			70% Min on No. 200 Screen .....	.0029 - 0.075	
<b>S170</b>	All Pass No. 20 Screen .....	.0331 - 0.850		<p style="text-align: center;">Steel Grit Hardness Ranges:</p> <p style="text-align: center;">SG Hardness = 40 - 50-RC</p> <p style="text-align: center;">MG hardness = 50 - 55 RC</p> <p style="text-align: center;">LG Hardness = 56 - 60 RC</p> <p style="text-align: center;">HG hardness = 60+ RC</p>			
	10% Max on No. 25 Screen .....	.0278 - 0.710					
	85% Min on No. 40 Screen .....	.0165 - 0.425					
97% Min on No. 45 Screen .....	.0139 - 0.355						
<b>S110</b>	All Pass No. 30 Screen .....	.0234 - 0.600					
	10% Max on No. 35 Screen .....	.0197 - 0.500					
	80% Min on No. 50 Screen .....	.0117 - 0.300					
<b>S110</b>	90% Min on No. 80 Screen .....	.0070 - 0.180					